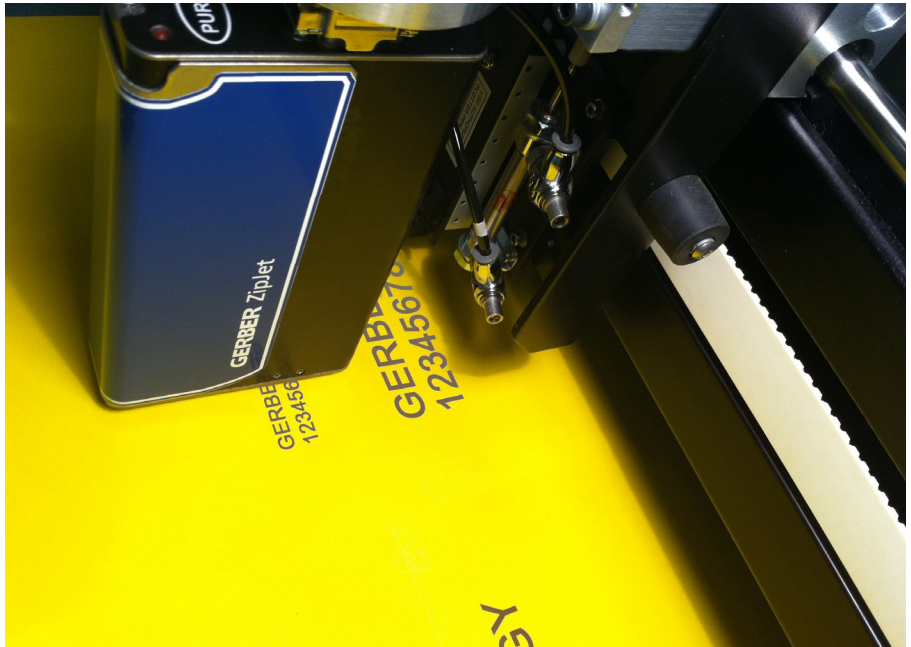


The ZipJet™ inkjet part identification system prints alphanumeric text and bar codes* on a wide variety of materials to enable users to identify cut parts and composite plies accurately. Ink can be either permanent or semi-permanent.

ZipJet

Part Identification System



Proven technology.

The ZipJet system utilizes Hewlett Packard HP® LaserJet 45A inkjet cartridges – tried and true printing technology from a market leader. It prints one-quarter inch or one-half inch alphanumeric annotation at 300 dots per inch both vertically and horizontally. The ZipJet system won't harm material because it does not come into contact with it.

Maximizes productivity.

The ZipJet system eliminates workflow bottlenecks caused by traditional pen-plotted part annotation. It also maximizes productivity of your GERBERcutter® system because it prints at speeds up to 200 feet (60 meters) per minute. As such, it is much faster than traditional vector-plotted annotation.

Easy to use.

The ZipJet system is easy to use. Inkjet cartridges are easy to access and quickly snap in and out for fast replacement. The system uses a variety of ink types to enable printing on a wide range of porous and non-porous materials.

Reduces errors.

ZipJet eliminates the need to manually apply pre-printed labels to parts – a time consuming, oftentimes error-prone process.

*Bar code machine legibility is a function of material and material surface properties. Not all materials will accommodate machine readable bar codes. Test prints on actual material are recommended.

Gerber Technology, Tolland, CT 06084
USA - Tel: +1(860) 871-8082
www.gerbertechnology.com
Copyright © 2011 Gerber Scientific
International, Inc.
Form No. ZipJet_E-08092011